

Vogt Tube - Ice machines P34AL

In 1938, Vogt Ice revolutionized the ice making industry by introducing the world's first automatic sized icemaker. Today, Vogt Tube-Ice machines enjoy a well-earned reputation as the most energy efficient, dependable ice machines on the market.

Heavy-duty industrial construction, automatic operation, and the best warranty in the business make the Vogt ice machines the only "clear" choice for your ice making needs.

Three Ice Sizes Available:

- Cylinder (Tube-Ice)
 - 7/8" Diameter X 1" long
 - 1 1/8" Diameter X 1" long
 - 1 3/8" Diameter X 1" long

P34AL Features:

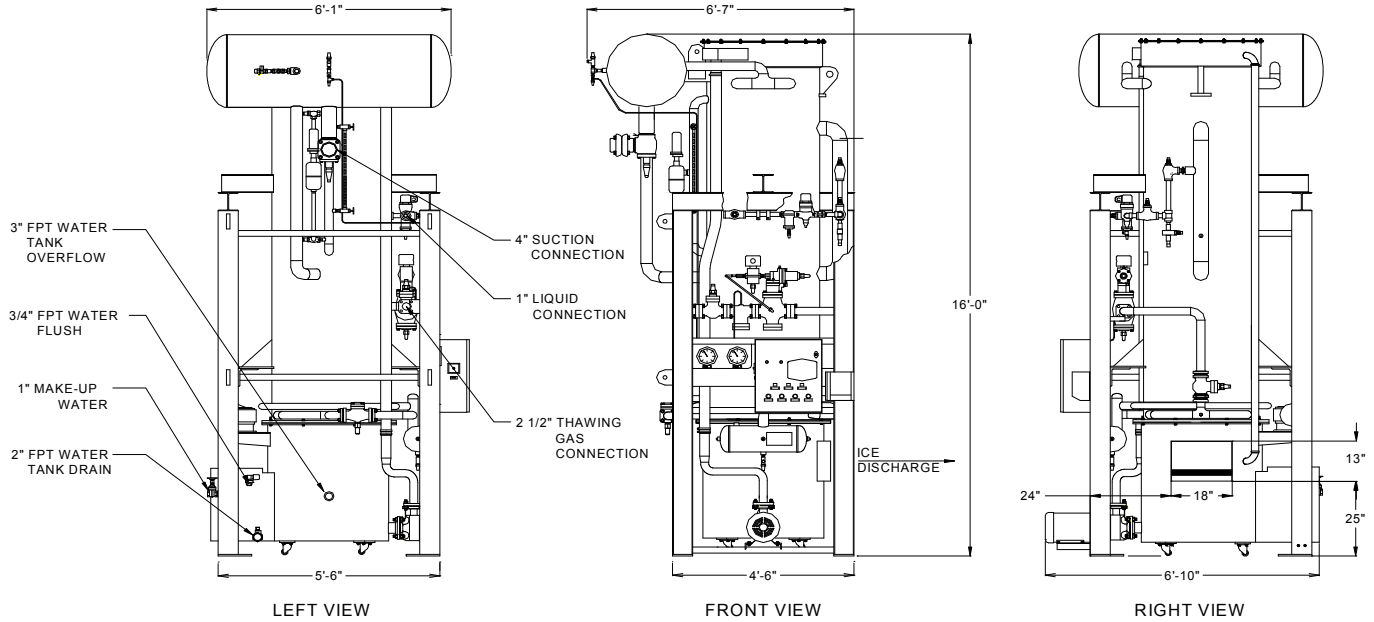
- 25 Year Life expectancy
- Up to 50 tons per day
- 25 Year evaporator warranty
- Manufactured in accordance with the A.S.M.E. code
- Ammonia Refrigerant
- Controls U.L. Approved
- Factory Tested and Certified
- High Energy Efficiency

Options:

- All Stainless Steel Construction
- PLC Controls
- Crushed Ice



Vogt® Tube-Ice Machines



SPECIFICATIONS

MODEL P34AL (Ammonia Refrigerant)

STANDARD CAPACITY, TONS PER 24 HOURS												
WATER TEMP.	7/8" DIA. ICE	1 1/8" DIA. ICE	1 3/8" DIA. ICE									
80 °F	52.3	56.9	43.2									
70 °F	54.9	59.8	45.6									
60 °F	57.6	63.0	48.2									
50 °F	60.7	66.7	51.1									
WEIGHT (LBS)	OPERATING: 11,070 SHIPPING: 9,400	OPERATING: 11,670 SHIPPING: 10,000	OPERATING: 11,670 SHIPPING: 10,000									
STANDARD ELECTRICAL	230 V, 3P, 60 Hz - 460V, 3P, 60 Hz - 400V, 3P, 50 Hz (OPTIONAL ELECTRICAL ARRANGEMENTS ON REQUEST)											
CAPACITY TABLE, TONS PER 24 HOURS (AT SUCTION TEMPERATURE °F)												
WATER TEMPERATURE	0			5			15			20		
	7/8"	1 1/8"	1 3/8"	7/8"	1 1/8"	1 3/8"	7/8"	1 1/8"	1 3/8"	7/8"	1 1/8"	1 3/8"
80 °F	67.4	75.6	58.3	60.3	66.6	51.0	43.4	46.4	34.9	33.4	34.9	26.1
70 °F	70.3	79.2	61.3	63.0	69.9	53.7	45.7	48.8	36.9	35.2	36.9	27.6
60 °F	73.5	83.2	64.6	66.0	73.5	56.7	48.1	51.6	39.1	37.3	39.1	29.3
50 °F	76.9	87.5	68.3	69.3	77.6	60.0	50.9	54.7	41.6	0.7	41.5	31.3

NOTE: STANDARD CAPACITY BASED ON SUCTION TEMPERATURE OF 10 °F AND AN AMBIENT (AIR) TEMPERATURE OF 90 °F

Vogt reserves the right to change designs and specifications without notice.

Operating Conditions:

The ice machine shall not be subjected to an atmospheric temperature lower than 50 °F nor higher than 90 °F without effect on performance. Water for condensing and for ice making purposes shall be non-corrosive.

The water shall be at a constant pressure not less than 30 lbs. at the ice machine location. The condition of the water to make satisfactory ice shall be the responsibility of the purchaser.

Vogt®
TubeIce | Turbo
Engineered to Endure

Vogt Ice, LLC
 1000 West Ormsby Ave.,
 Louisville KY 40210
 Phone: 502-635-3000
 E-mail: info@vogtice.com

